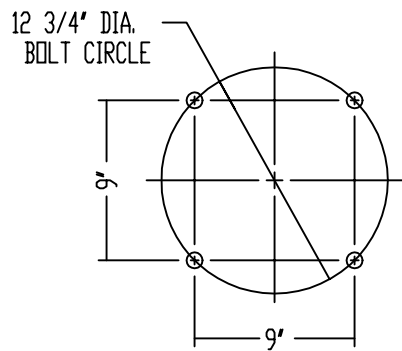
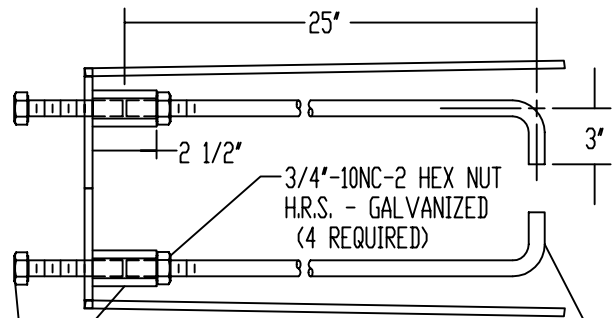


6061-T4 AL. ALLOY POLE CAP WITH (3) 1/4"-20NC-2 ST. STL. ALLEN HEAD CUP POINT SET SCREWS

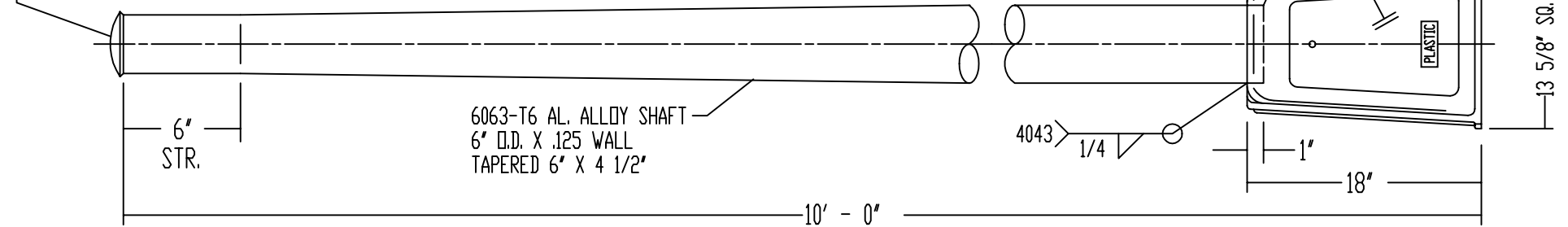


3/4"-10NC-2 X 2' LONG HEX HEAD BOLT, LOCKWASHER AND FLATWASHER - H.R.S GALV. (4 OF EACH REQUIRED)



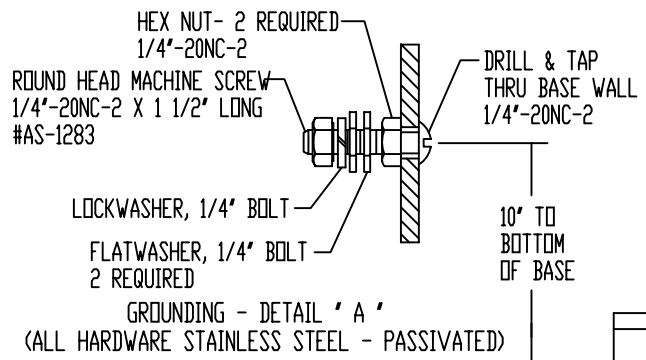
3/4"-10NC-2 X 2 1/2" LONG HEX COUPLING H.R.S. - GALVANIZED (4 REQUIRED)
 3/4" DIA. X 28" LONG ANCHOR ROD (4 REQUIRED) ANCHOR ROD TO BE 55,000 PSI MIN. YIELD STRENGTH PER AASHTO M314-90, GRADE 55. TOP 6" OF ROD TO BE GALVANIZED PER AASHTO M232 CLASS C, (ASTM A153).

NOTE: 6063 ASSEMBLY WITH .375 WALL OR LESS TO BE HEAT-TREATED TO T6 TEMPER AFTER WELDING.



6063-T6 AL. ALLOY SHAFT
 6" O.D. X .125 WALL
 TAPERED 6" X 4 1/2"

356-T6 CAST AL. ALLOY BASE TYPE ' TBJ-6 ' WITH GROUNDING SCREW PER DETAIL ' A '
 1/4" THK. ABS PLASTIC DOOR ASSEMBLY WITH ULTRA-VIOLET INHIBITORS (OUTSIDE SURFACE OF DOOR TO HAVE 2" X 3" SELF-ADHESIVE LABEL)
 BOTTOM OF BASE TO BE COATED WITH BITUMINOUS PAINT



GROUNDING - DETAIL ' A '
 (ALL HARDWARE STAINLESS STEEL - PASSIVATED)

ALTERATIONS					MATERIAL	P&K POLE PRODUCTS 84 Foundry St., Newark, N.J.	
ALT.	DESCRIPTION	DATE	BY	CH	STOCK SIZE	TITLE	
A	WAS 15' LONG ANCHORAGE	07-15-94	WWW			SP645510002G-71	
B	DELETED ANCHOR CLEATS	08-21-95	WWW		FINISH OR TEMPER	BERGEN CODE SP06-1000	
						DR. M.M.S.	11-23-84
						CH. W.W.W.	11-23-84
						APP.	
					CUSTOMER	B-79661-2	
					BERGEN COUNTY DEPT. OF PUBLIC WORKS	SCALE	NONE

P&K